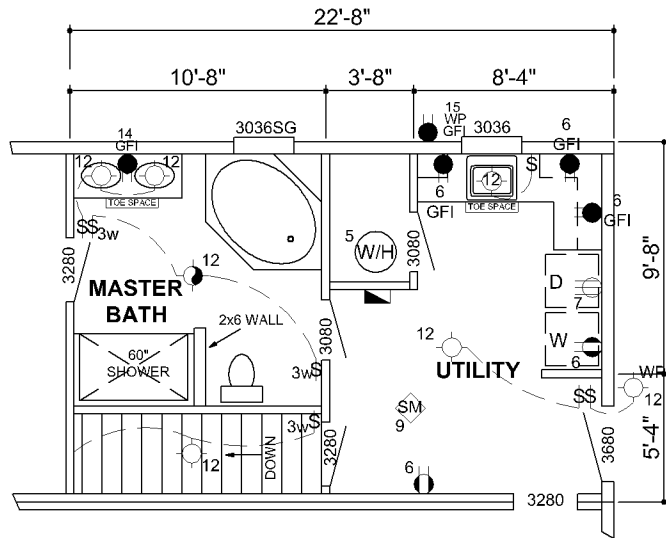
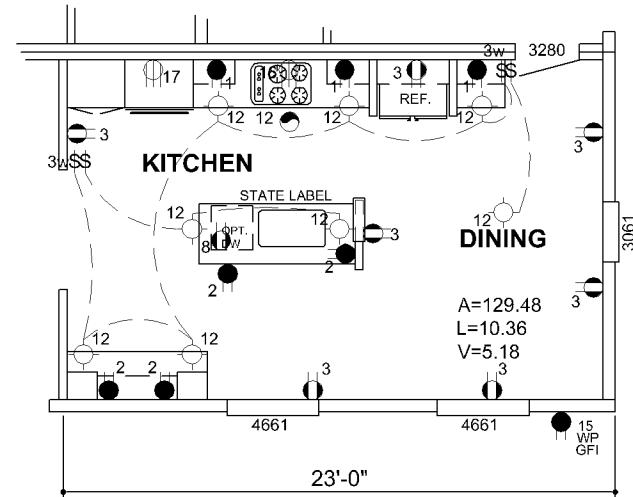


- NOTE:
1. ALL INTERIOR WALLS 2x4 UNLESS MARKED OTHERWISE.
 2. ALL EXTERIOR WALLS 2x6 UNLESS MARKED OTHERWISE.
 3. HALL WIDTH A MINIMUM OF 36" FINISHED.
 4. FOR GENERAL ALTERNATES SEE PAGES G 2.0 AND G 5.0.
 5. WINDOWS SHOWN TO MEET 8% LIGHT AND 4% VENT.
 6. ALL PENETRATIONS THRU CEILING AND FLOOR TO BE FIRESTOPPED.

REV: 7-20-2006	MODEL FM 15 3060 3BR. / 2 BATH - RANCH	REV:	REVISED PER NEW SPECIFICATIONS	DUTCH HOUSING, INC. 1500 N. DETROIT ST. LAGRANGE, IN. 46761	DATE: 2-23-2005
DWG NO: FM 15.0		TITLE:	FLOOR PLAN		BY: BG



OPTIONAL STAIRWELL



KITCHEN OPTION

FLOOR PLAN NOTES:

1. ALL INTERIOR WALLS 2x4 UNLESS MARKED OTHERWISE.
2. ALL EXTERIOR WALLS 2x6 UNLESS MARKED OTHERWISE.
3. HALL WIDTH A MINIMUM OF 36" FINISHED.

4. FOR GENERAL ALTERNATES SEE PAGES G 2.0 AND G 5.0.
5. WINDOWS SHOWN TO MEET 8% LIGHT AND 4% VENT.
6. ALL PENETRATIONS THRU CEILING AND FLOOR TO BE FIRESTOPPED.

ELECTRICAL NOTES:

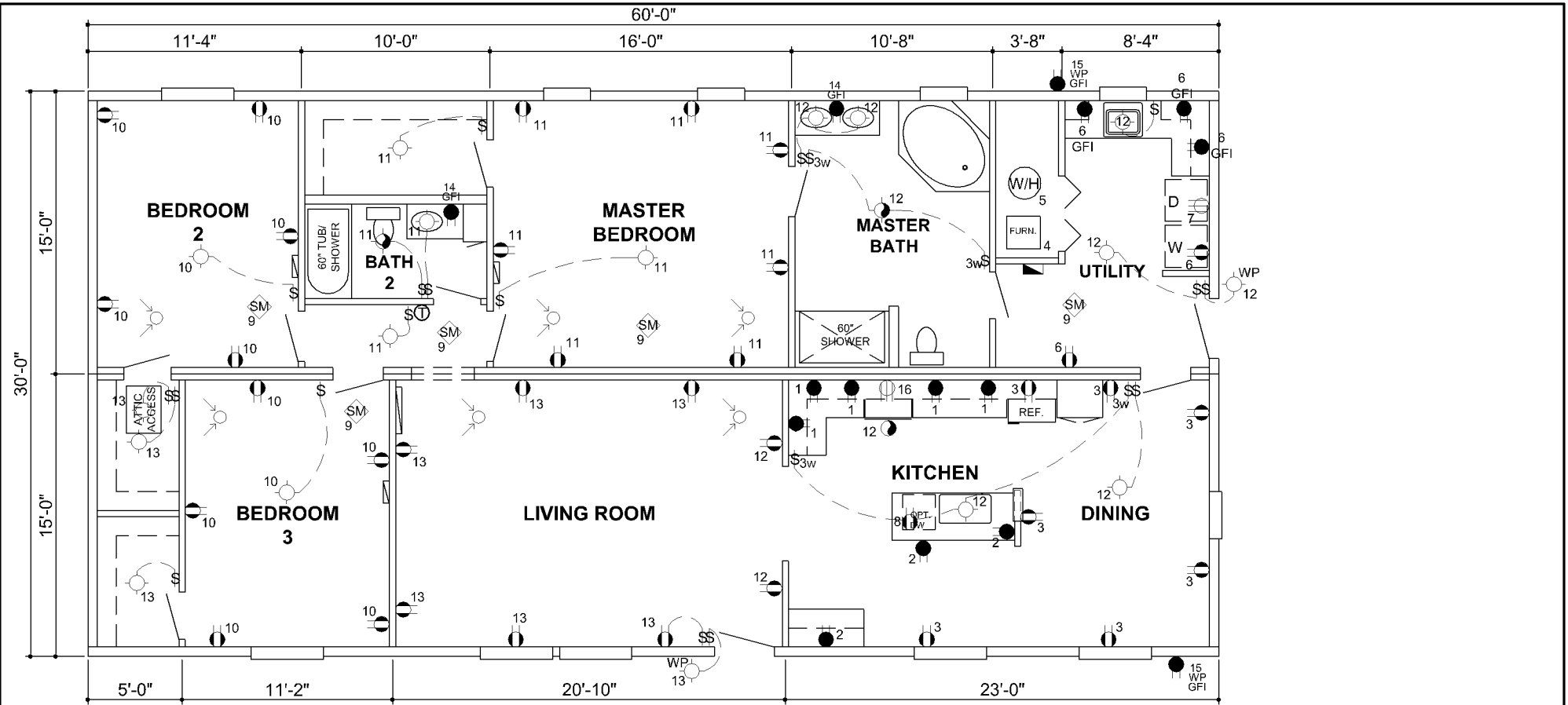
1. ALL BEDROOM OUTLETS SHALL BE PROTECTED BY AN ARC-FAULT CIRCUIT INTERRUPTER
2. SEE PAGE EL 1.0 FOR GENERAL ELECTRICAL NOTES.

HEATING AND RETURN AIR NOTES:

1. RETURN AIR SHALL NOT BE TAKEN FROM FURNACE / WATER HEATER ROOM IF EITHER ARE NOT SEALED COMBUSTION TYPE.
2. FURNACE MAY BE INSTALLED BY MANUFACTURER, WARM AIR AND RETURN AIR DUCT TO BE INSTALLED ON SITE.
3. WHEN MANUFACTURER INSTALLS FURNACE, RETURN AIR SYSTEM TO BE MOUNTED IN THE CEILING.
4. ALL REGISTERS IN BATHROOMS, AND UTILITY AREAS TO BE IN A VERTICAL POSITION FROM THE FLOOR SURFACE.

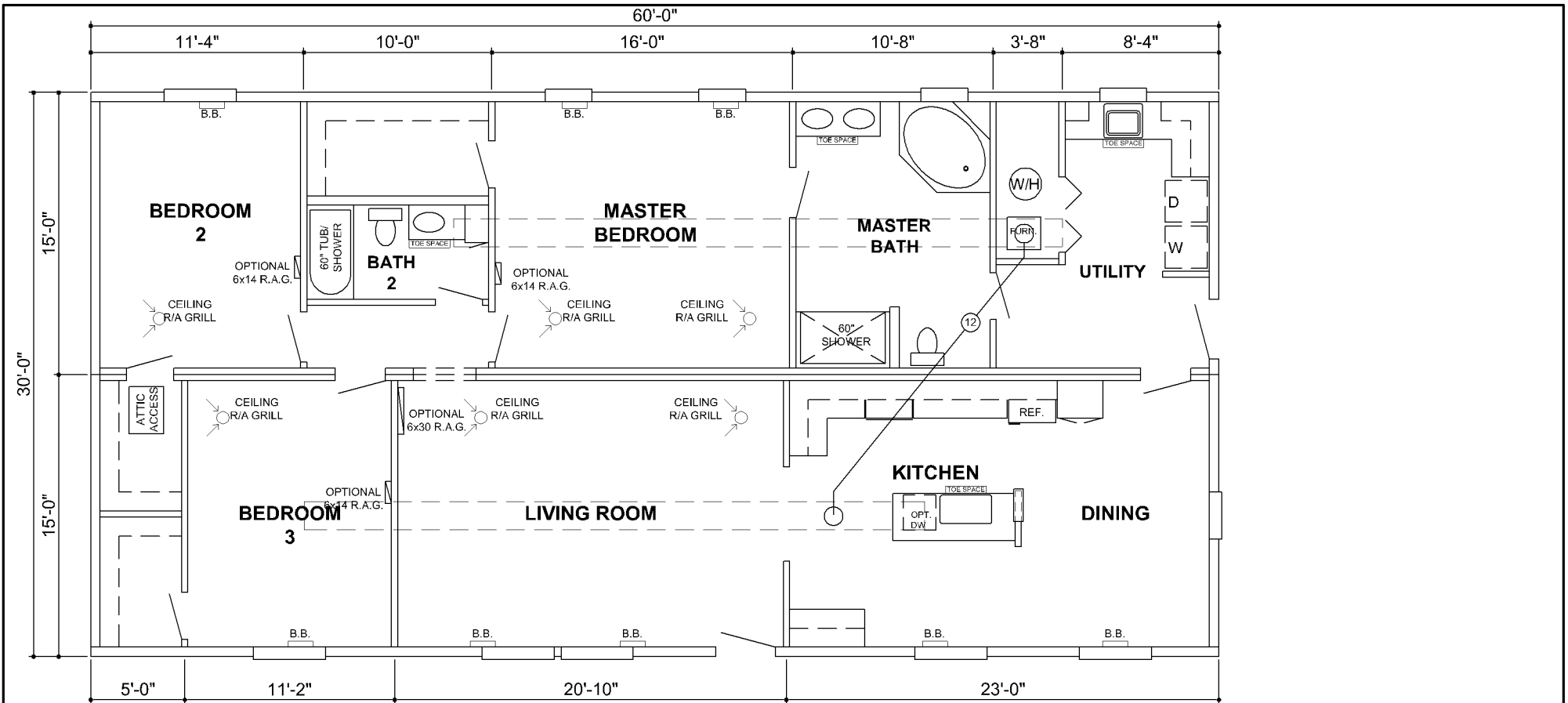
REV: 10-6-2006	MODEL FM 15 3060 3BR. / 2 BATH - RANCH	REV: REVISED HEATING AND RETURN AIR NOTE #2	DUTCH HOUSING, INC. 1500 N. DETROIT ST. LAGRANGE, IN. 46761	DATE: 2-23-2005
DWG NO: FM 15.0.1		TITLE: FLOOR PLAN OPTIONS		BY: BG





- NOTES:
1. ALL BEDROOM OUTLETS SHALL BE PROTECTED BY AN ARC-FAULT CIRCUIT INTERRUPTER
 2. SEE PAGE EL 1.0 FOR GENERAL ELECTRICAL NOTES.

REV: 7-20-2006	MODEL FM 15 3060 3BR. / 2 BATH - RANCH	REV:	REVISED PER NEW SPECIFICATIONS	DUTCH HOUSING, INC. 1500 N. DETROIT ST. LAGRANGE, IN. 46761	DATE: 2-23-2005
DWG NO: FM 15.0		TITLE:	ELECTRICAL LAYOUT		BY: BG



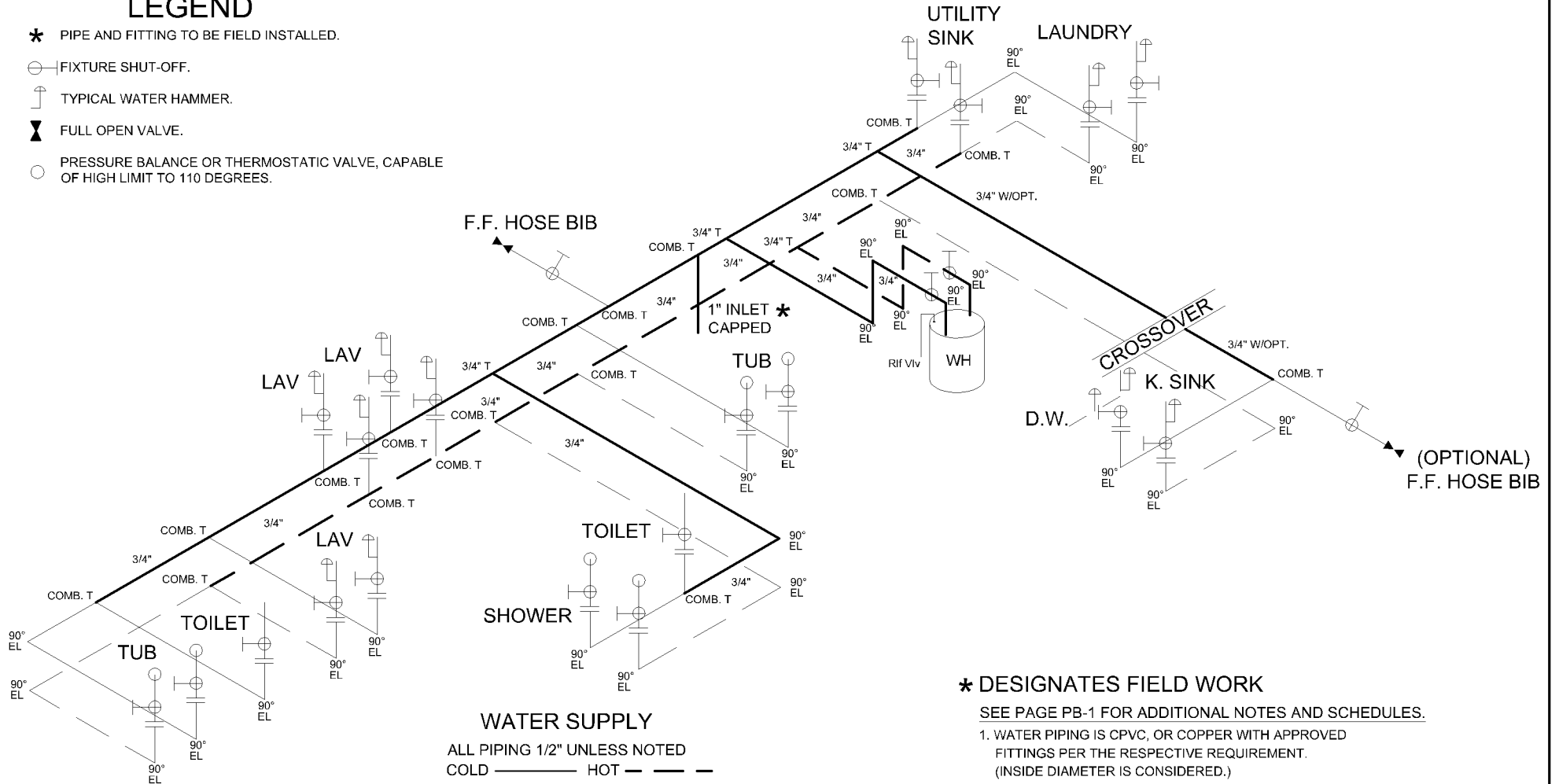
HEATING AND RETURN AIR NOTES:

1. RETURN AIR SHALL NOT BE TAKEN FROM FURNACE / WATER HEATER ROOM IF EITHER ARE NOT SEALED COMBUSTION TYPE.
2. FURNACE MAY BE INSTALLED BY MANUFACTURER, WARM AIR AND RETURN AIR DUCT TO BE INSTALLED ON SITE.
3. WHEN MANUFACTURER INSTALLS FURNACE, RETURN AIR SYSTEM TO BE MOUNTED IN THE CEILING.
4. ALL REGISTERS IN BATHROOMS, AND UTILITY AREAS TO BE IN A VERTICAL POSITION FROM THE FLOOR SURFACE.

REV: 10-6-2006	MODEL FM 15 3060 3BR. / 2 BATH - RANCH	REV: REVISED HEATING AND RETURN AIR NOTE #2	DUTCH HOUSING, INC. 1500 N. DETROIT ST. LAGRANGE, IN. 46761	DATE: 2-23-2005
DWG NO: FM 15.0		TITLE: HEATING AND RETURN AIR LAYOUT		BY: BG

LEGEND

- * PIPE AND FITTING TO BE FIELD INSTALLED.
- ⊖ FIXTURE SHUT-OFF.
- ⌋ TYPICAL WATER HAMMER.
- ⌘ FULL OPEN VALVE.
- PRESSURE BALANCE OR THERMOSTATIC VALVE, CAPABLE OF HIGH LIMIT TO 110 DEGREES.

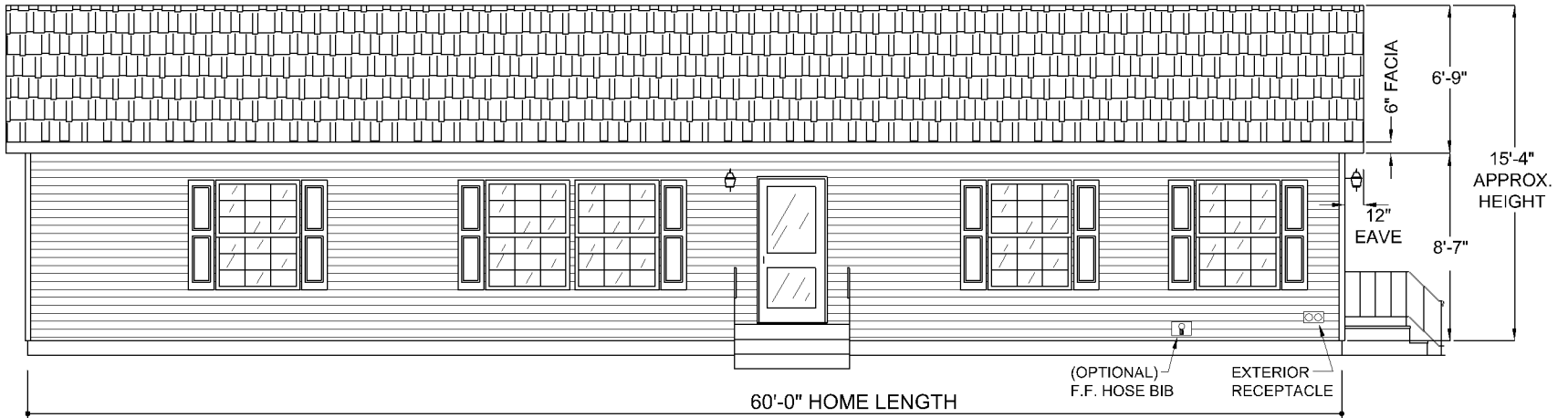


WATER SUPPLY
 ALL PIPING 1/2" UNLESS NOTED
 COLD ——— HOT - - - -

- * DESIGNATES FIELD WORK**
 SEE PAGE PB-1 FOR ADDITIONAL NOTES AND SCHEDULES.
1. WATER PIPING IS CPVC, OR COPPER WITH APPROVED FITTINGS PER THE RESPECTIVE REQUIREMENT. (INSIDE DIAMETER IS CONSIDERED.)
 2. HORIZONTAL PIPING TO BE SUPPORTED EVERY 3' O.C.
 3. EXTERIOR FAUCETS SHALL BE PROTECTED BY AN APPROVED VACUUM BREAKER.
 - * 4. A SHUT-OFF WILL BE INSTALLED AT EACH FIXTURE, THE MAIN SHUT-OFF TO BE SUPPLIED AND INSTALLED BY OTHERS ON-SITE. SHUT-OFF MAY BE INSTALLED EITHER ABOVE OR BELOW FLOOR WHERE ACCESS IS ALLOWED.
 5. REQUIRED WATER HAMMERS TO COMPLY WITH ASSE 1010.

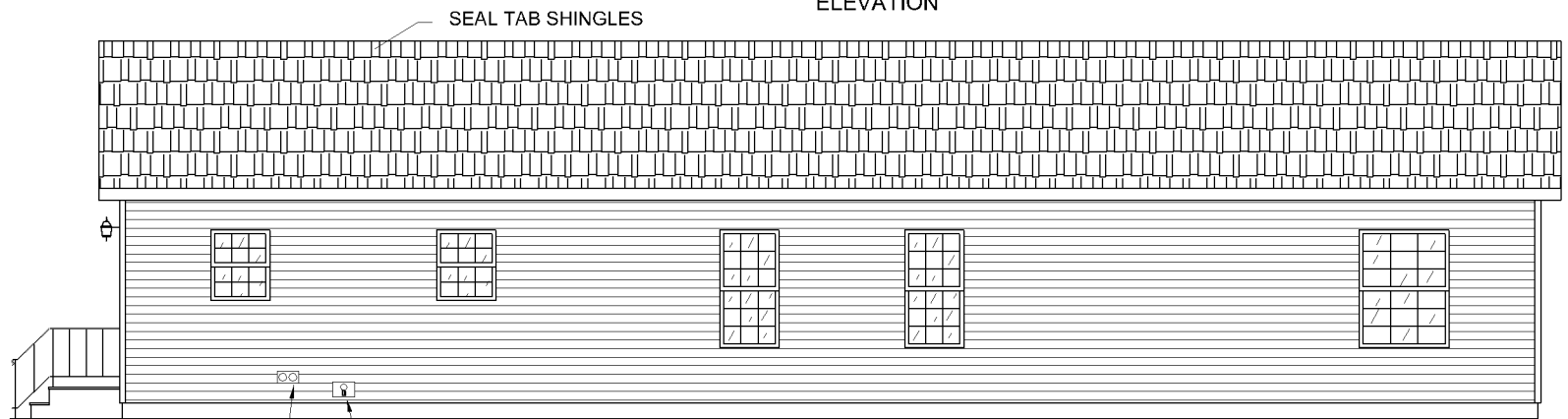
REV: 10-3-2006	MODEL FM 15 3060 3BR. / 2 BATH - RANCH	REV: UPDATED NOTE 4	DUTCH HOUSING, INC. 1500 N. DETROIT ST. LAGRANGE, IN. 46761	DATE: 2-25-2005
DWG - NO: FM 15.1		TITLE: WATER SUPPLY		BY: BG

12
5 7/12 OPT.



60'-0" HOME LENGTH

FRONT SIDE ELEVATION



REAR SIDE ELEVATION

GENERAL NOTES:

1. VINYL SHUTTERS SHOWN ARE STANDARD FRONT SIDE ONLY.
2. ALL WINDOWS SINGLE HUNG INSULATED LOW E.
3. SIDING IS VINYL LAP FACTORY APPLIED OVER 7/16" OSB SHEATHING AND POLYETHYLENE FABRIC HOMEWRAP SHEATHING PAPER (PRIMEWRAP OR EQUAL) INSTALLED TO THE MANUFACTURER'S INSTALLATION INSTRUCTIONS. (SIDING FOR ENDS IS SHIPPED LOOSE FOR FIELD INSTALLATION BY OTHERS.)
4. PERIMETER ROOF OVERHANG IS 12" OF PERFORATED METAL OR VINYL SOFFIT WITH VENTILATION TO THE ATTIC SPACE.

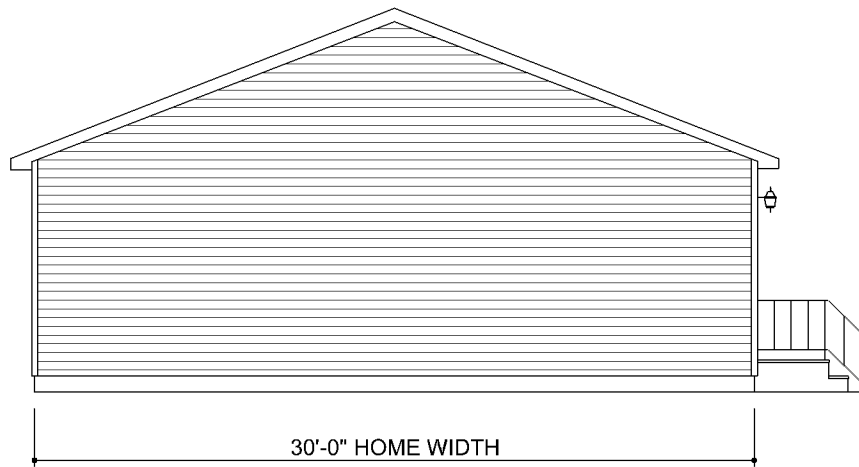
5. SOME STANDARD AND OPTIONAL FEATURES ARE SHOWN.
6. ALL GUTTERS, DOWN SPOUTS, STEPS AND HANDRAILS BY OWNER.
7. FOUNDATION WINDOWS AND/OR VENTS NOT SHOWN.
8. THIS HOME HAS ATTIC VENTILATION OF NOT LESS THAN 1/150th OF THE ATTIC AREA.
9. OWNER SHOULD GIVE CONSIDERATION TO WINDOW AND DOOR LOCATIONS WHEN PLANNING FOR A SITE BUILT GARAGE.

REV: 7-20-2006	MODEL FM 15 3060 RANCH	REV:	DUTCH HOUSING, INC. 1500 N. DETROIT ST. LAGRANGE, IN. 46761	DATE: 2-25-2005
DWG NO: EL-FM 15.0		TITLE: FRONT & REAR ELEVATIONS		BY: BG

12
5 | 7/12 OPT.



RIGHT END
ELEVATION

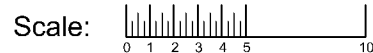


LEFT END
ELEVATION

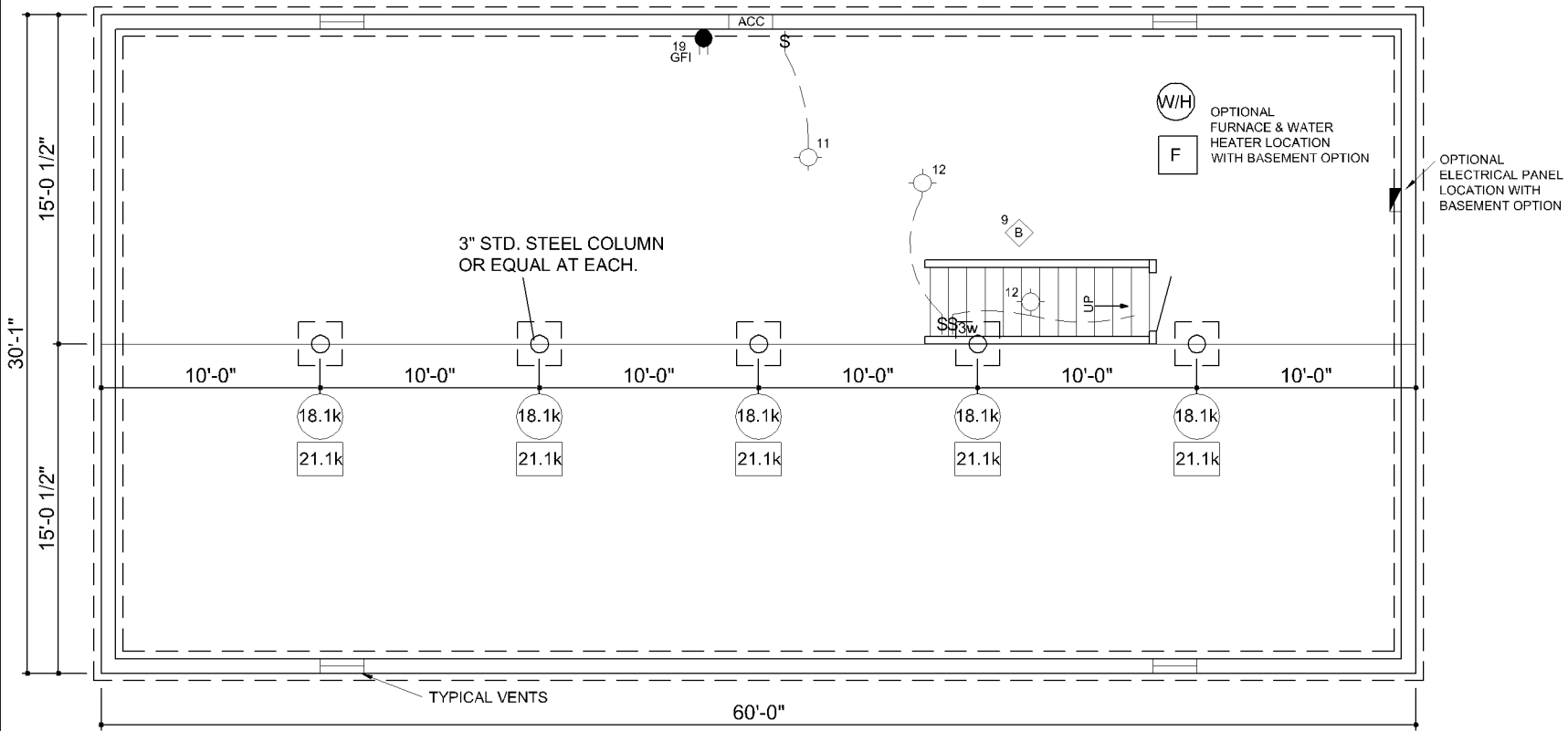
GENERAL NOTES:

1. VINYL SHUTTERS SHOWN ARE STANDARD FRONT SIDE ONLY.
2. ALL WINDOWS SINGLE HUNG INSULATED LOW E.
3. SIDING IS VINYL LAP FACTORY APPLIED OVER 7/16" OSB SHEATHING AND POLYETHYLENE FABRIC HOMEWRAP SHEATHING PAPER (PRIMEWRAP OR EQUAL) INSTALLED TO THE MANUFACTURER'S INSTALLATION INSTRUCTIONS. (SIDING FOR ENDS IS SHIPPED LOOSE FOR FIELD INSTALLATION BY OTHERS.)
4. PERIMETER ROOF OVERHANG IS 12" OF PERFORATED METAL OR VINYL SOFFIT WITH VENTILATION TO THE ATTIC SPACE.
5. SOME STANDARD AND OPTIONAL FEATURES ARE SHOWN.
6. ALL GUTTERS, DOWN SPOUTS, STEPS AND HANDRAILS BY OWNER.
7. FOUNDATION WINDOWS AND/OR VENTS NOT SHOWN.
8. THIS HOME HAS ATTIC VENTILATION OF NOT LESS THAN 1/150th OF THE ATTIC AREA.
9. OWNER SHOULD GIVE CONSIDERATION TO WINDOW AND DOOR LOCATIONS WHEN PLANNING FOR A SITE BUILT GARAGE.

REV:	MODEL FM 15 3060 RANCH	REV:	TITLE: END ELEVATIONS	DUTCH HOUSING, INC. 1500 N. DETROIT ST. LAGRANGE, IN. 46761	DATE: 2-25-2005
DWG NO: EL-FM 15.1					BY: BG

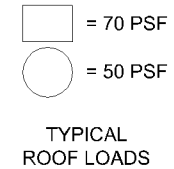


CRAWL SPACE PLAN TO HAVE SUMP. LOCATE ELECTRICAL GFI OUTLET NEAR SUMP PIT, LOCATE LIGHT SWITCH AT CRAWL SPACE OPENING WITH LIGHT NEAR SUMP PIT.



NOTES:

1. Splices in mating line girder shall be supported by column posts or I-beam.
2. Dealer/installer may use I-beam under mate wall to increase jack post spacing. Consult a local Professional Engineer.
3. Crawl space ventilation to equal 1/150th of the total area.
4. Crawl space access minimum size to be 18" x 24" with removable cover.
5. For additional general electrical notes see page EL-1.
6. For additional general foundation notes see page G-4.



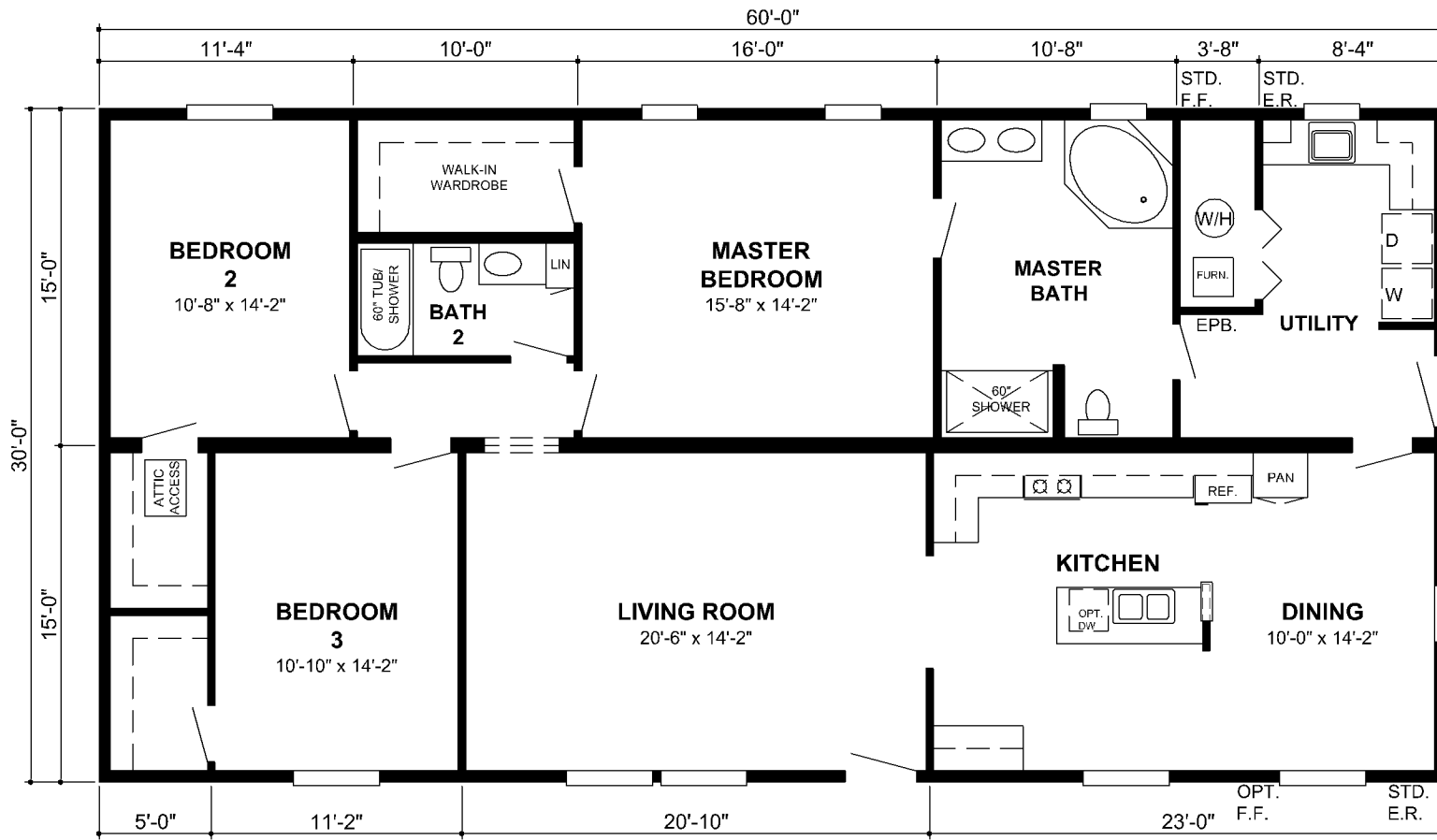
REV: 7-27-2006
 DWG NO: FO-FM 15.0

MODEL FM 15
 3060 RANCH

REV: REVISED NOTES
 TITLE: FOUNDATION W/ LVL MATING LINE RIM JOISTS

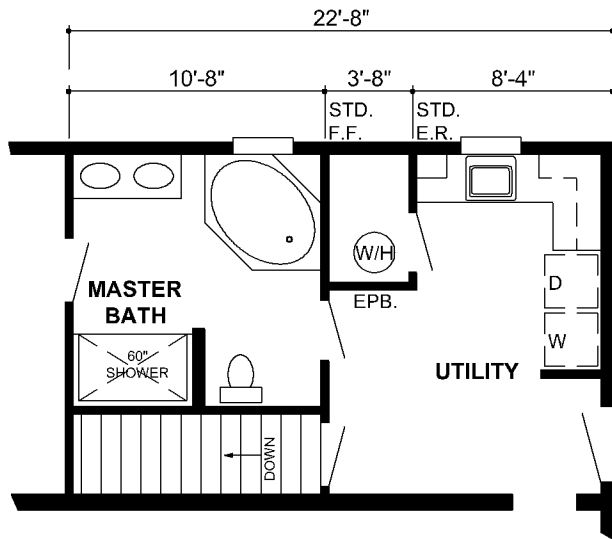
DUTCH HOUSING, INC.
 1500 N. DETROIT ST.
 LAGRANGE, IN. 46761

DATE: 2-25-2005
 BY: BG

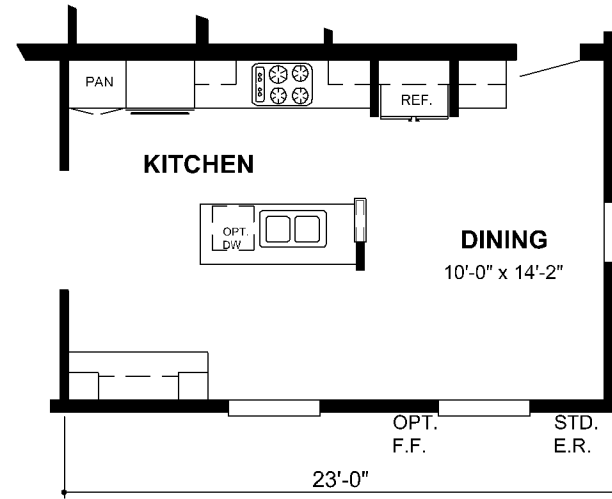


MODEL FM 15
3060 3BR. / 2 BATHS RANCH
APPROX. 1800 SQ. FT.

7-20-2006



OPTIONAL STAIRWELL



KITCHEN OPTION

MODEL FM 15
 3060 3BR. / 2 BATHS RANCH
 APPROX. 1800 SQ. FT.

7-20-2006